

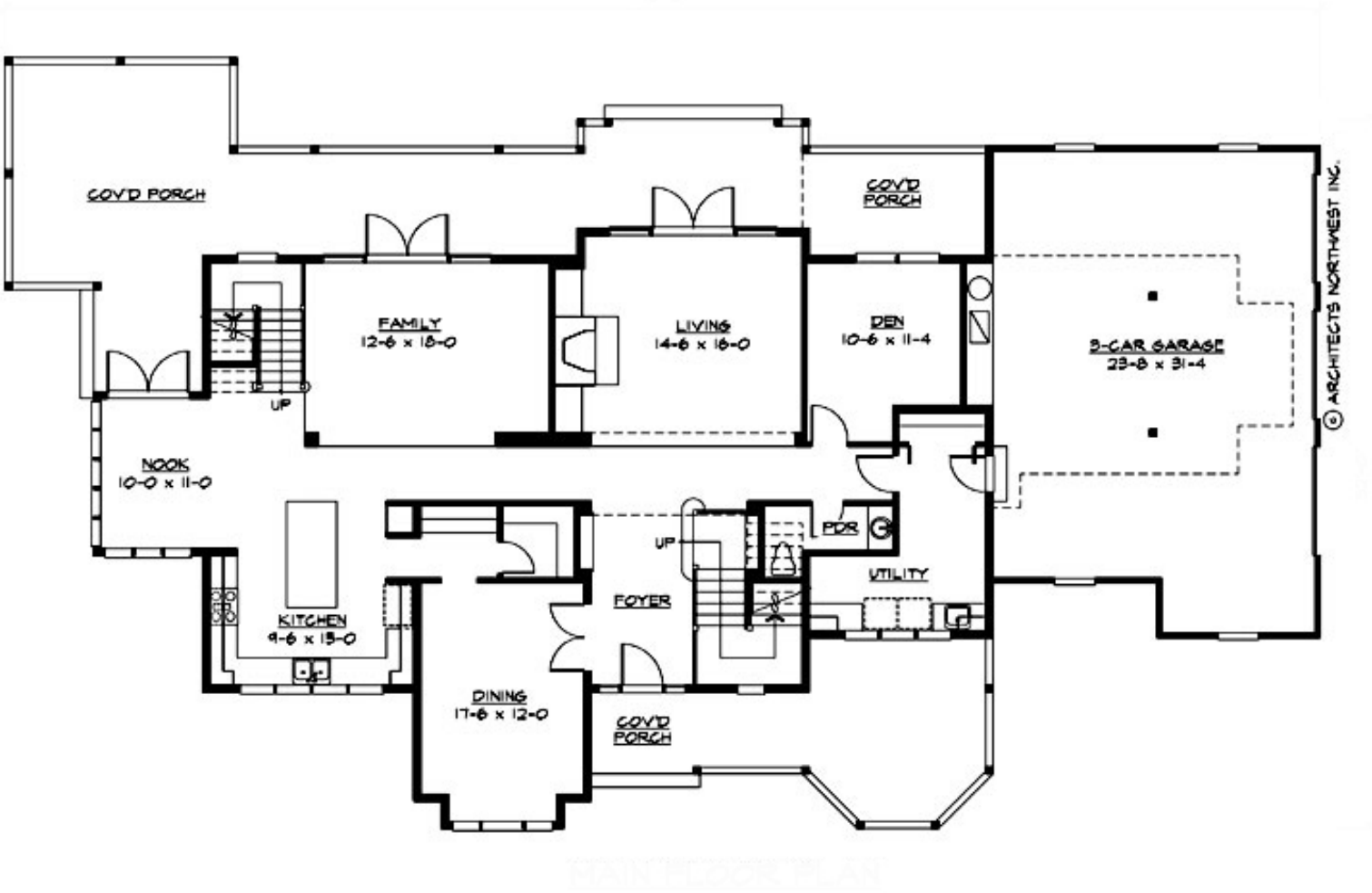
## WYNDHAM - M3825A3S-0

Total Area: **3825 Sq. Ft.**  
Garage Area: **840 Sq. Ft.**  
Garage Size: **3**  
Stories: **2**  
Bedrooms : **4**  
Full Baths : **3**  
Half Baths : **1**  
Width : **97'-0"**  
Depth : **52'-0"**  
Height : **36'-6"**  
Foundation : **Crawl Space**



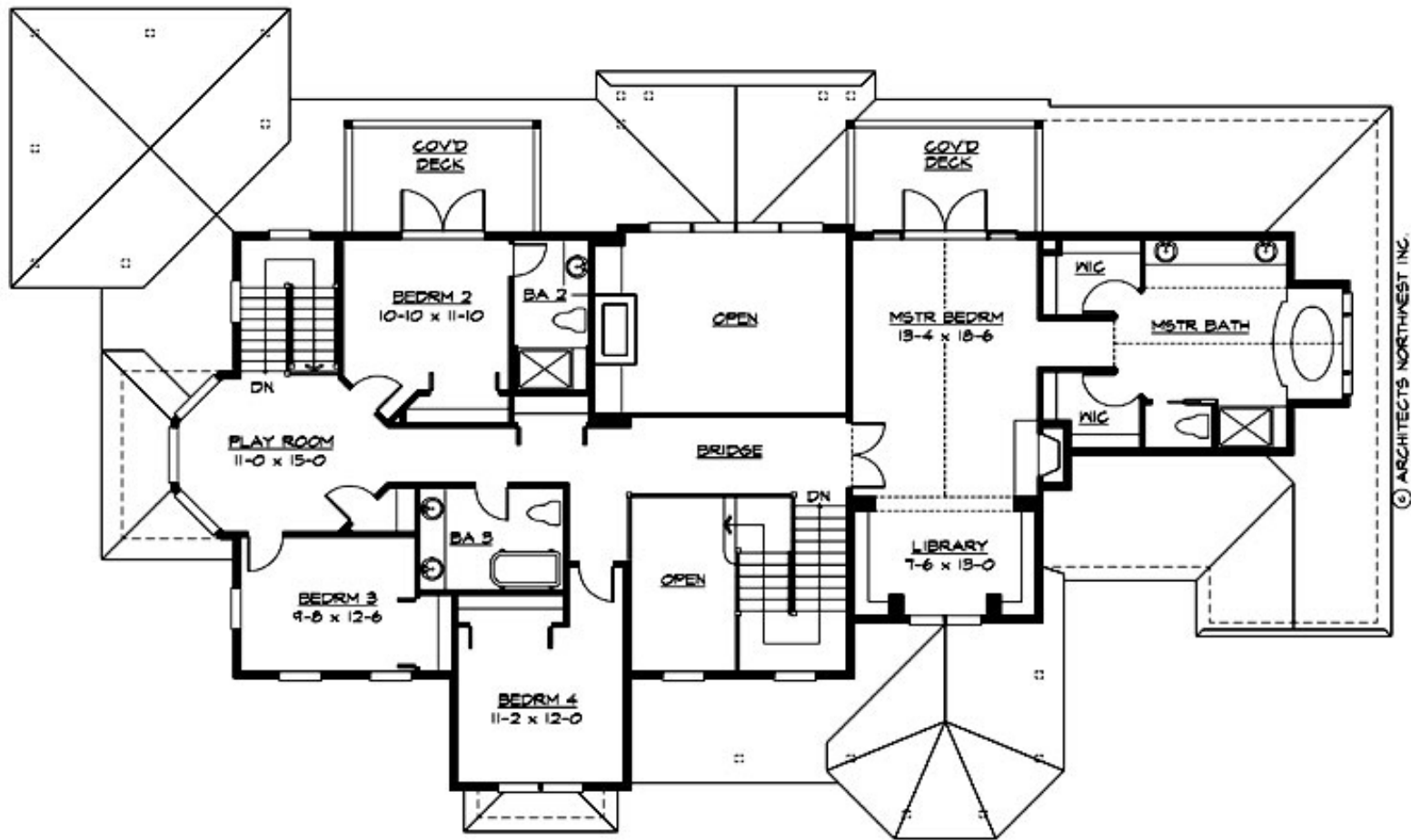
WYNDHAM - M3825A3S-0

MAIN FLOOR



# WYNDHAM - M3825A3S-0

## UPPER FLOOR



UPPER FLOOR PLAN

# WYNDHAM - M3825A3S-0

## PLAN DETAILS

### Area Summary

Total Area:	3825 Sq. Ft.
Main Floor:	2000 Sq. Ft.
Upper Floor:	1825 Sq. Ft.
Garage Floor:	840 Sq. Ft.

### General Information

Stories:	2
Width:	97`-0"
Depth:	52`-0"
Height:	36`-6"

### Architectural Style

Country  
Farmhouse  
Traditional

### Number of Rooms

Bedrooms:	4
Full Baths:	3
Half Baths:	1

### Garage

Garage Size:	3
Garage Door Location:	Side

### Roof Pitches

Primary:	12:12
Secondary:	4:12

### Wall Heights

Main:	10-0"
Upper:	9-0"

### Foundation Type

Crawl Space

### Roof Framing

Combination

### Floor Load

Live (lbs):	40 PSF
Dead (lbs):	10 PSF

### Roof Load

Live (lbs):	25 PSF
Dead (lbs):	15 PSF
Wind:	85 MPH

### Design Features

- Bonus Space @ & Upper Floor
- Den/Office
- Front Porch
- Great Room
- Laundry Room @ Main Floor
- Master Bedroom @ Upper Floor Rear
- Country House Plans
- Farmhouse Home Plans
- Traditional House Plans
- Wide Lot House Plans