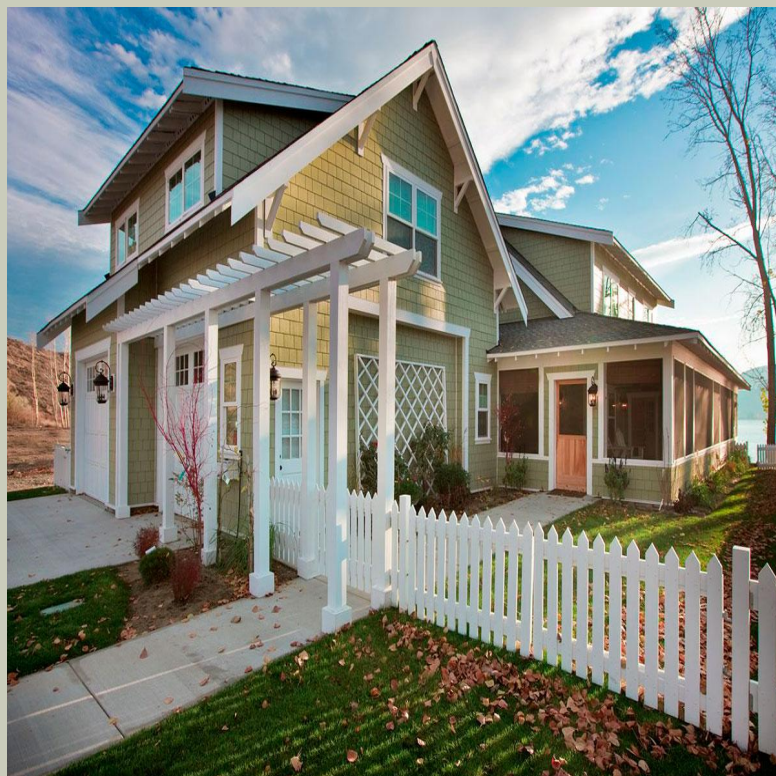


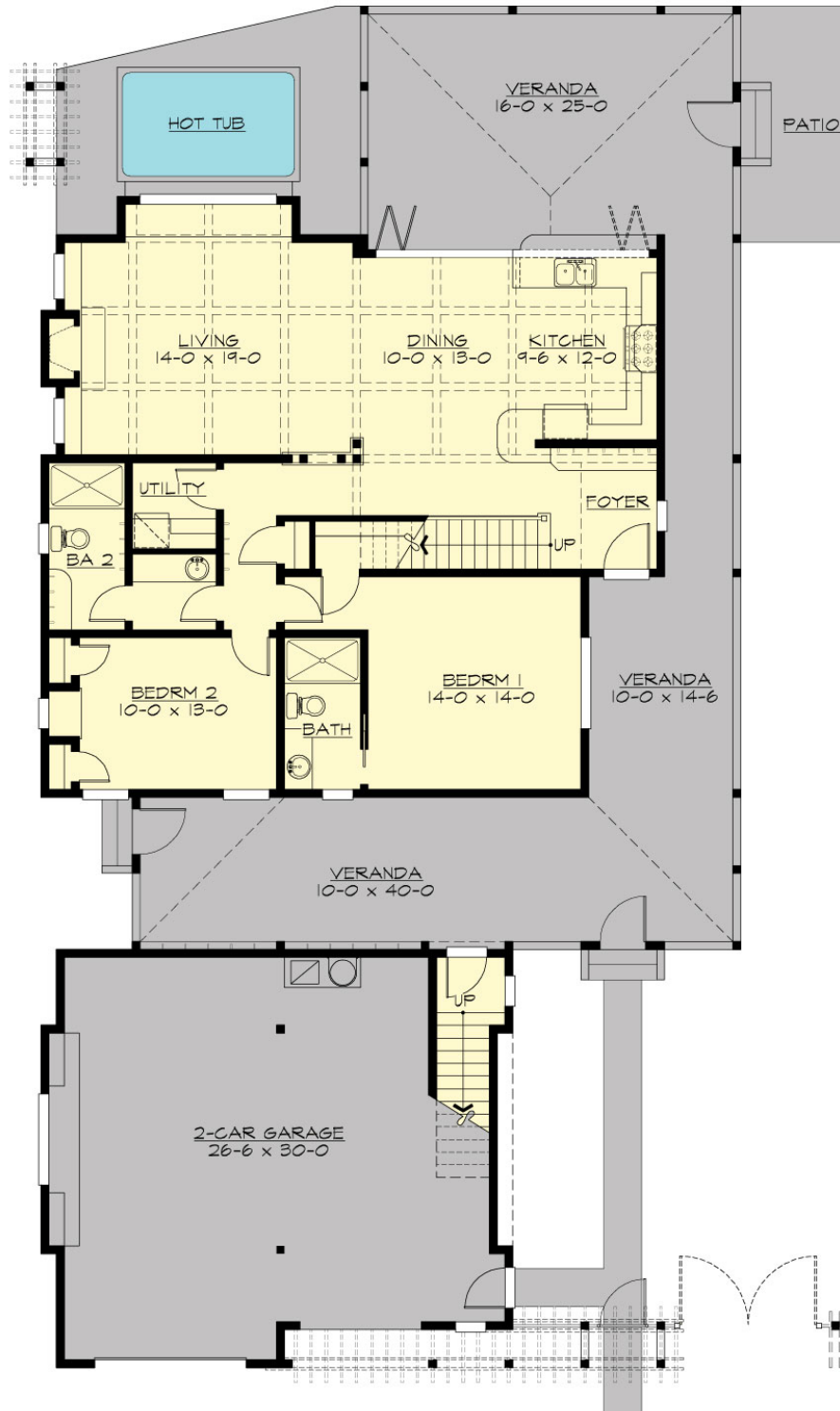
## VERANDA BAY - M2900A2FD-0

Total Area: **2900 Sq. Ft.**  
Garage Area: **1075 Sq. Ft.**  
Garage Size: **2**  
Stories: **2**  
Bedrooms : **4**  
Full Baths : **4**  
Half Baths :  
Width : **46`-0"**  
Depth : **89`-6"**  
Height : **26`-6"**  
Foundation : **Crawl Space**



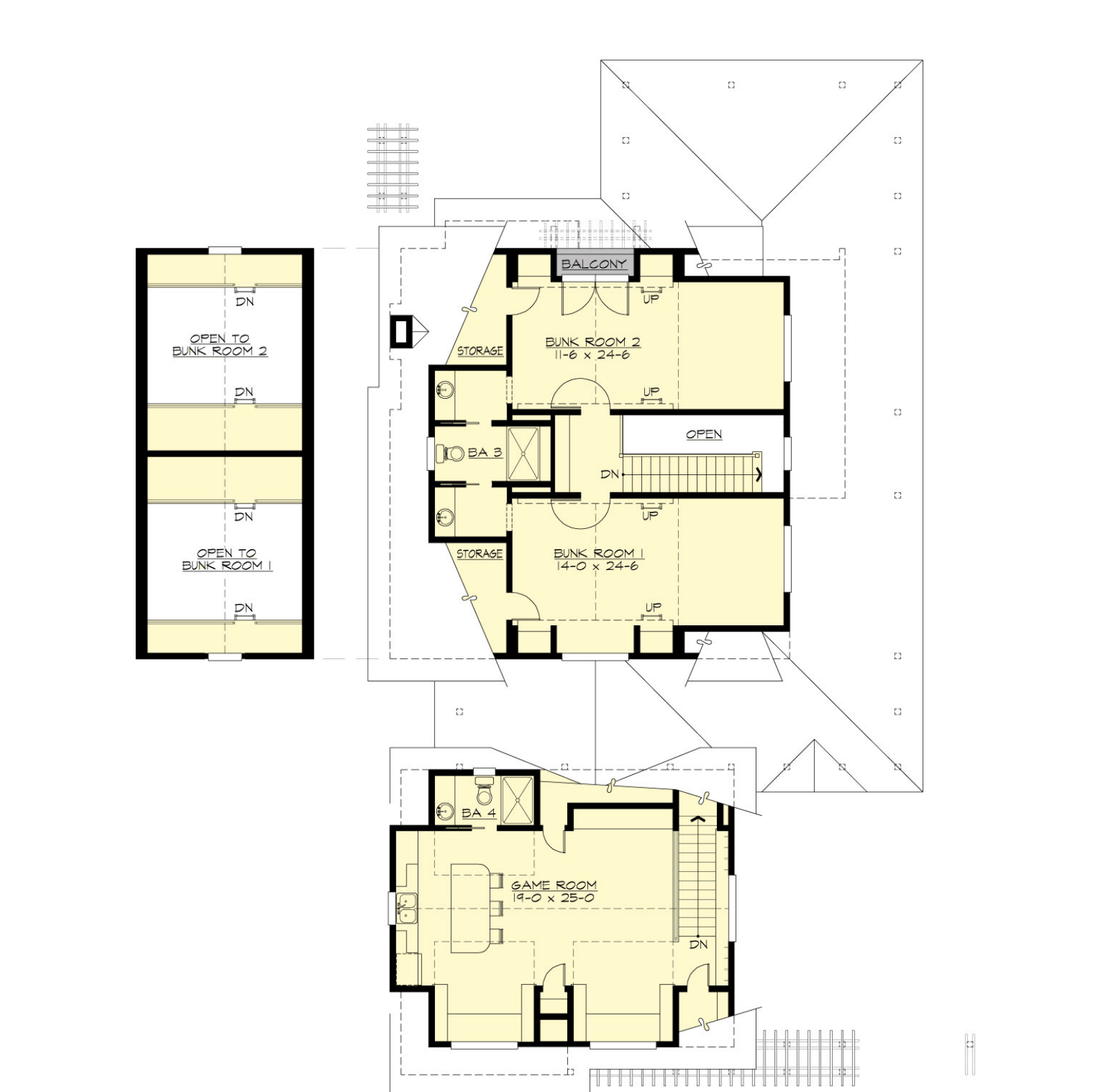
# VERANDA BAY - M2900A2FD-0

## MAIN FLOOR



**VERANDA BAY - M2900A2FD-0**

## UPPER FLOOR



# VERANDA BAY - M2900A2FD-0

## PLAN DETAILS

### Area Summary

Total Area:	<b>2900 Sq. Ft.</b>
Main Floor:	<b>1400 Sq. Ft.</b>
Upper Floor:	<b>1500 Sq. Ft.</b>
Garage Floor:	<b>1075 Sq. Ft.</b>

### General Information

Stories:	<b>2</b>
Width:	<b>46`-0"</b>
Depth:	<b>89`-6"</b>
Height:	<b>26`-6"</b>

### Architectural Style

Bungalow  
Cottage  
Farmhouse

### Number of Rooms

Bedrooms:	<b>4</b>
Full Baths:	<b>4</b>

### Garage

Garage Size:	<b>2</b>
Garage Door Location:	<b>Front</b>
Garage Type:	<b>Detached</b>

### Roof Pitches

Primary:	<b>10:12</b>
Secondary:	<b>4:12</b>

### Wall Heights

Main:	<b>9-0"</b>
Upper:	<b>9-0"</b>

### Foundation Type

Crawl Space

### Roof Framing

Stick

### Floor Load

Live (lbs):	<b>40 PSF</b>
Dead (lbs):	<b>10 PSF</b>

### Roof Load

Live (lbs):	<b>25 PSF</b>
Dead (lbs):	<b>15 PSF</b>
Wind:	<b>85 MPH</b>

### Design Features

- Bonus Space @ & Upper Floor
- Wrap-Around Porch
- Great Room
- Laundry Room @ Main Floor
- Master Bedroom @ Main Floor Front
- Bungalow House Plans
- Cottage House Plans
- Farmhouse Home Plans
- Vacation House Plans