

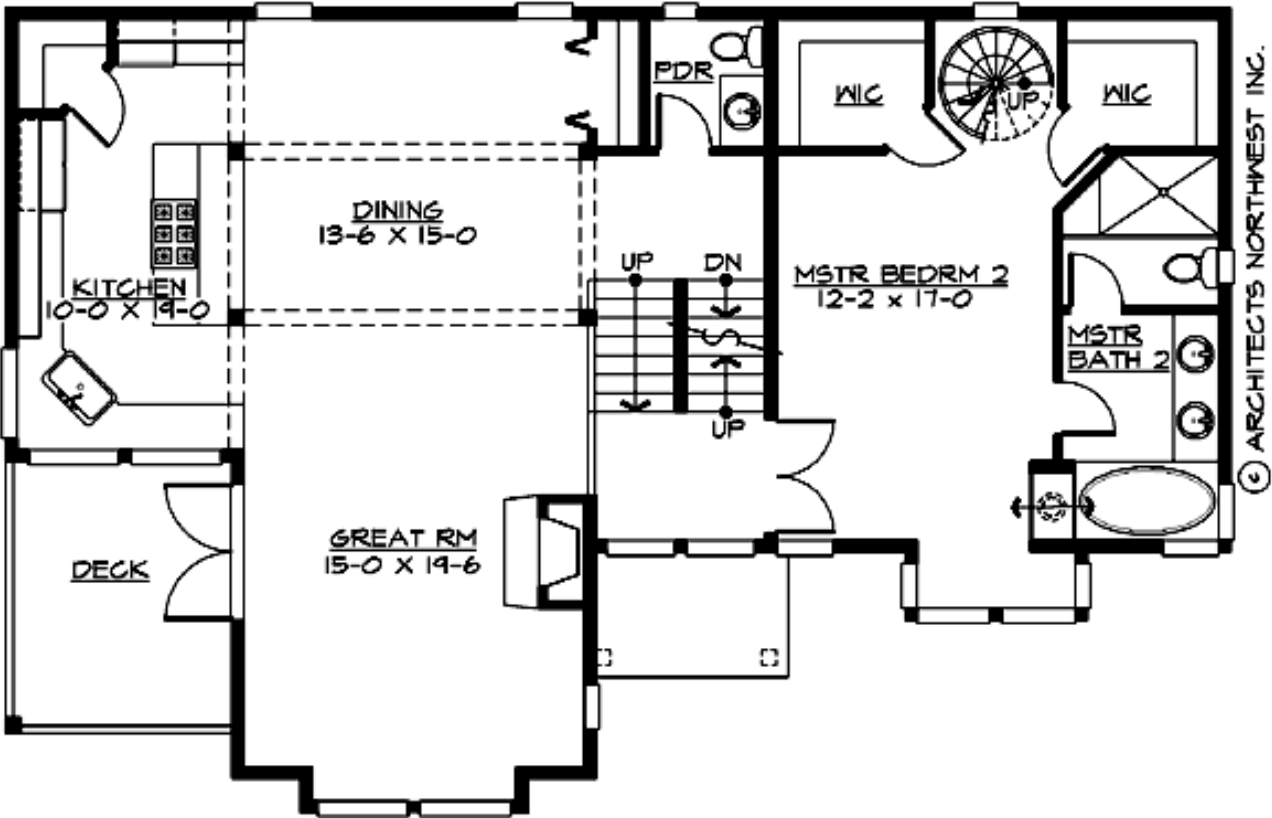
## RUDOLPH - S3345A2F-0DB

Total Area: **3345 Sq. Ft.**  
Garage Area: **480 Sq. Ft.**  
Garage Size: **3**  
Stories: **3**  
Bedrooms : **3**  
Full Baths : **3**  
Half Baths : **1**  
Width : **54`-0"**  
Depth : **36`-0"**  
Height : **34`-6"**  
Foundation : **Basement**



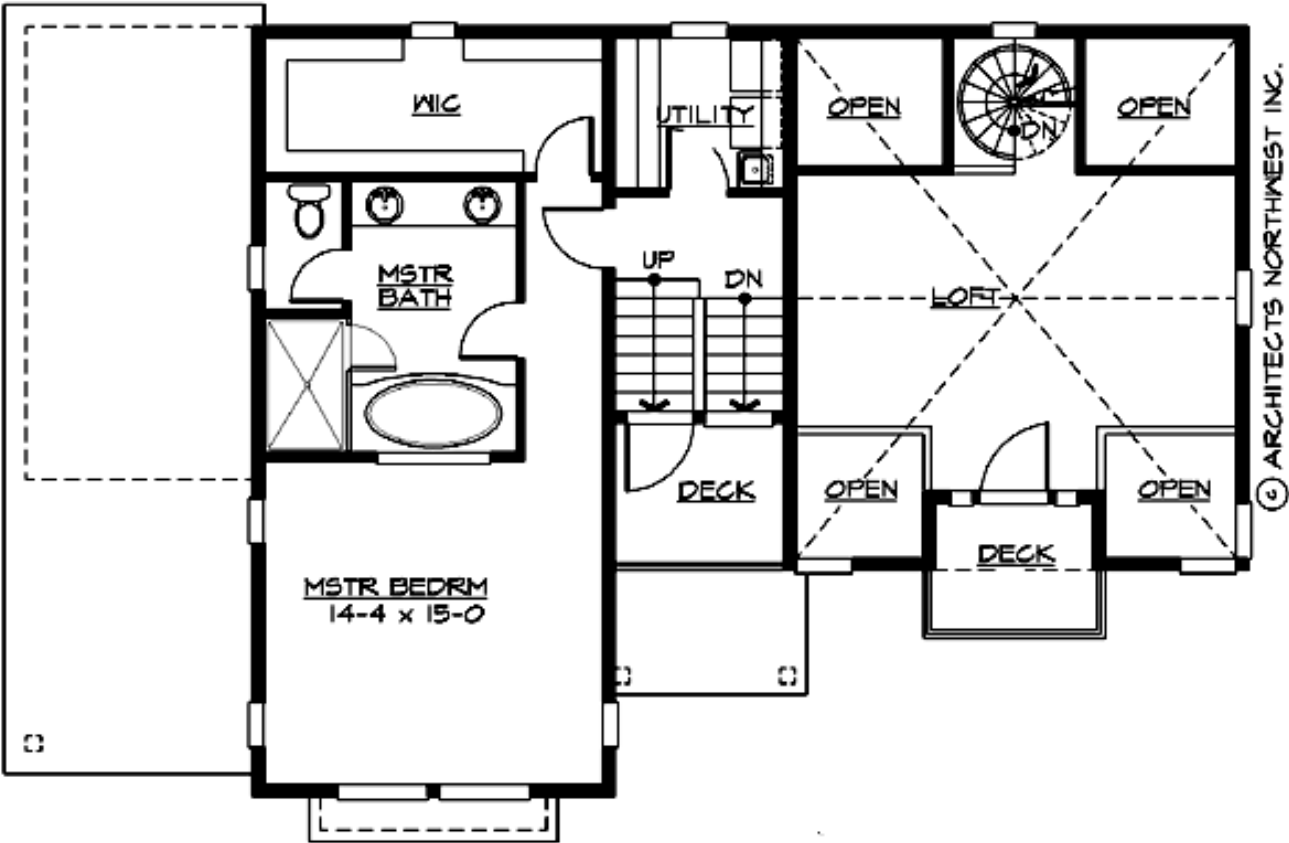
RUDOLPH - S3345A2F-0DB

MAIN FLOOR



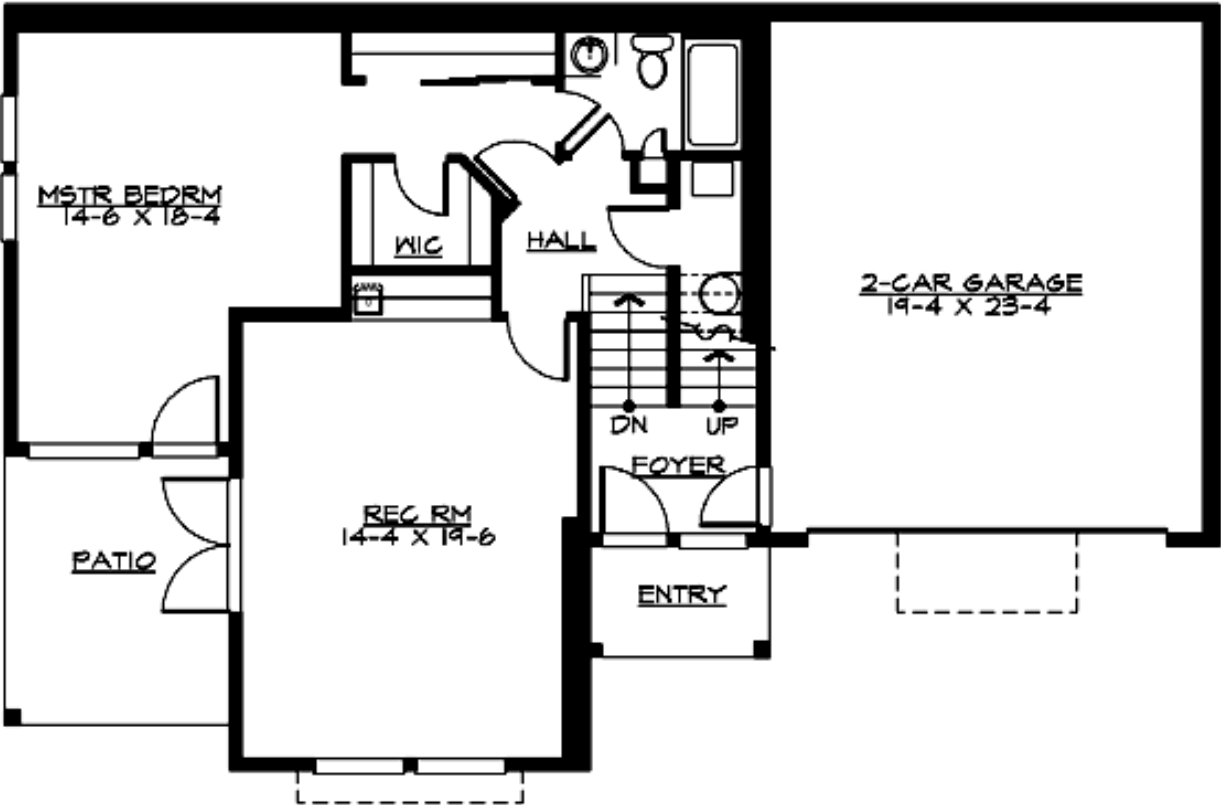
RUDOLPH - S3345A2F-0DB

UPPER FLOOR



RUDOLPH - S3345A2F-0DB

LOWER FLOOR



© ARCHITECTS NORTHWEST INC.

# RUDOLPH - S3345A2F-0DB

## PLAN DETAILS

### Area Summary

Total Area:	3345 Sq. Ft.
Main Floor:	1455 Sq. Ft.
Upper Floor:	954 Sq. Ft.
Lower Floor:	936 Sq. Ft.
Garage Floor:	480 Sq. Ft.

### General Information

Stories:	3
Width:	54`-0"
Depth:	36`-0"
Height:	34`-6"

### Architectural Style

Craftsman  
Northwest  
Shingle

### Number of Rooms

Bedrooms:	3
Full Baths:	3
Half Baths:	1

### Garage

Garage Size:	3
Garage Door Location:	Front

### Roof Pitches

Primary:	3:12
Secondary:	8:12

### Wall Heights

Main:	9-0"
Upper:	8-0"
Lower:	9-0"

### Foundation Type

Daylight Basement

### Roof Framing

Stick

### Floor Load

Live (lbs):	40 PSF
Dead (lbs):	10 PSF

### Roof Load

Live (lbs):	25 PSF
Dead (lbs):	15 PSF
Wind:	85 MPH

### Design Features

- Bonus Space @ & Lower Floor
- Great Room
- Laundry Room @ & Upper Floor
- Master Bedroom @ Upper Floor Front
- Craftsman House Plans
- Northwest Floor Plans
- Shingle House Plans
- View Lot (Front) Plans