

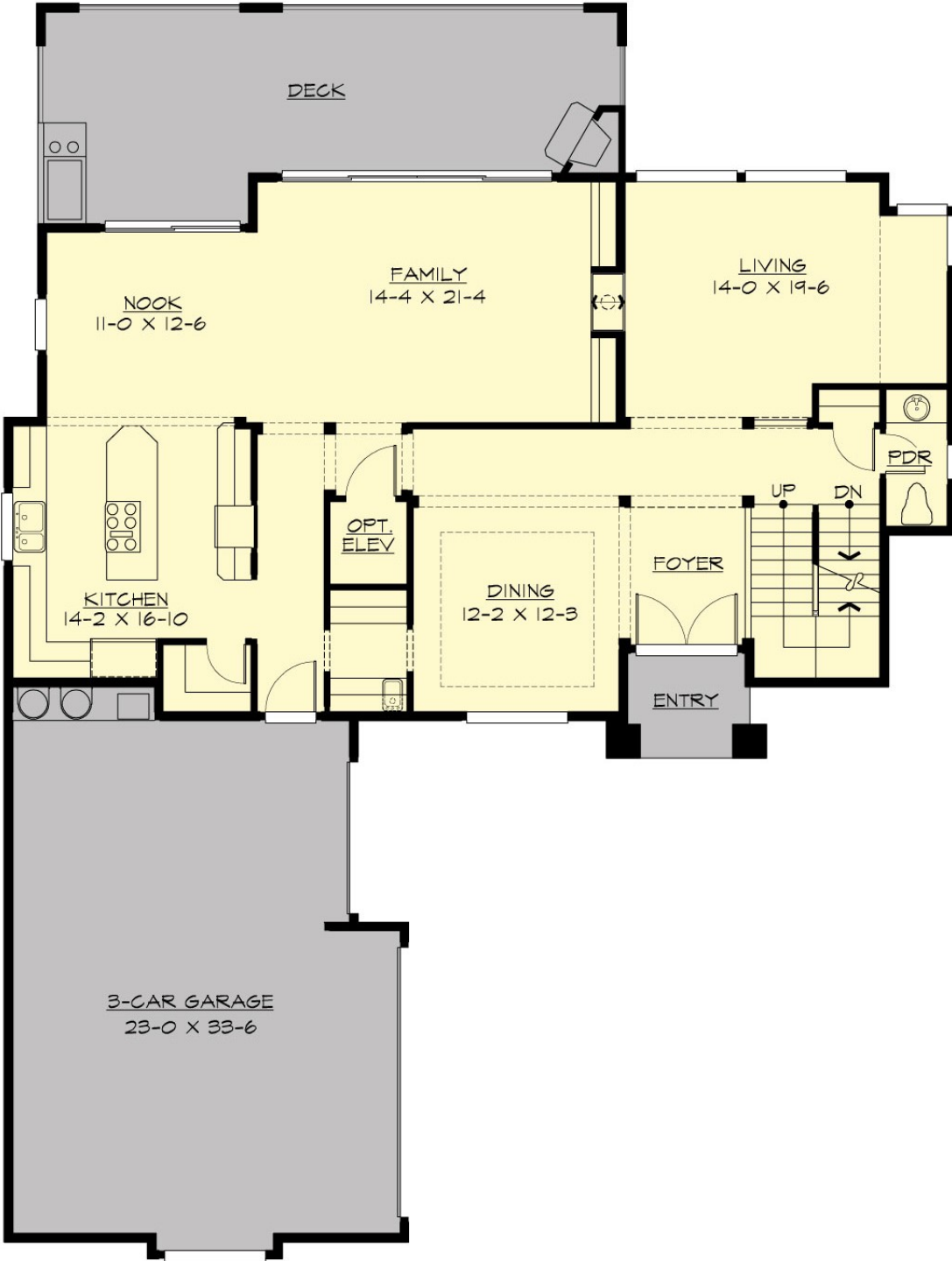
## MONDAVIO - M4858B3S-1DB

Total Area: **4858 Sq. Ft.**  
Garage Area: **734 Sq. Ft.**  
Garage Size: **3**  
Stories: **3**  
Bedrooms : **4**  
Full Baths : **3**  
Half Baths : **1**  
Width : **56'-6"**  
Depth : **74'-0"**  
Height : **26'-0"**  
Foundation : **Basement**



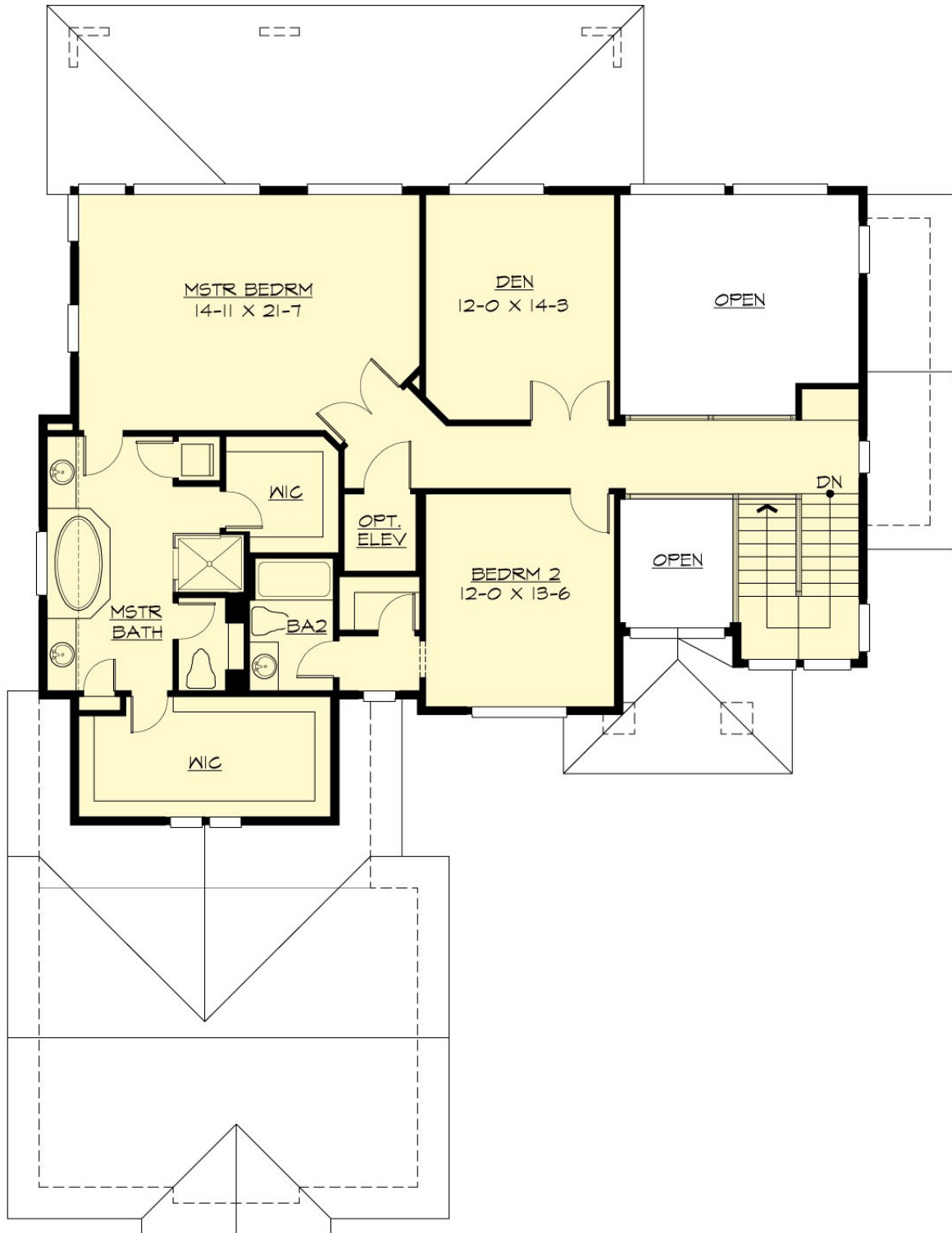
MONDAVIO - M4858B3S-1DB

MAIN FLOOR



# MONDAVIO - M4858B3S-1DB

## UPPER FLOOR



MONDAVIO - M4858B3S-1DB

LOWER FLOOR



# MONDAVIO - M4858B3S-1DB

## PLAN DETAILS

### Area Summary

Total Area:	4858 Sq. Ft.
Main Floor:	1655 Sq. Ft.
Upper Floor:	1501 Sq. Ft.
Lower Floor:	1702 Sq. Ft.
Garage Floor:	734 Sq. Ft.

### General Information

Stories:	3
Width:	56`-6"
Depth:	74`-0"
Height:	26`-0"

### Architectural Style

Craftsman  
Northwest  
Shingle

### Number of Rooms

Bedrooms:	4
Full Baths:	3
Half Baths:	1

### Garage

Garage Size:	3
Garage Door Location:	Side

### Roof Pitches

Primary:	4:12
Secondary:	3:12

### Wall Heights

Main:	10-0"
Upper:	9-0"
Lower:	10-0"

### Foundation Type

Daylight Basement

### Roof Framing

Trusses

### Floor Load

Live (lbs):	40 PSF
Dead (lbs):	10 PSF

### Roof Load

Live (lbs):	25 PSF
Dead (lbs):	15 PSF
Wind:	85 MPH

### Design Features

- Bonus Space @ , Upper & Lower Floor
- Den/Office
- Front and Rear Porch
- Great Room
- Laundry Room @ & Lower Floor
- Master Bedroom @ Upper Floor Rear
- Craftsman House Plans
- Northwest Floor Plans
- Shingle House Plans
- View Lot (Rear) Plans