

## MACMURRAY - M3684B3FT-2

Total Area: **3344 Sq. Ft.**  
Garage Area: **585 Sq. Ft.**  
Garage Size: **3**  
Stories: **2**  
Bedrooms : **5**  
Full Baths : **3**  
Half Baths : **1**  
Width : **52'-0"**  
Depth : **59'-0"**  
Height : **26'-10"**  
Foundation : **Crawl Space**



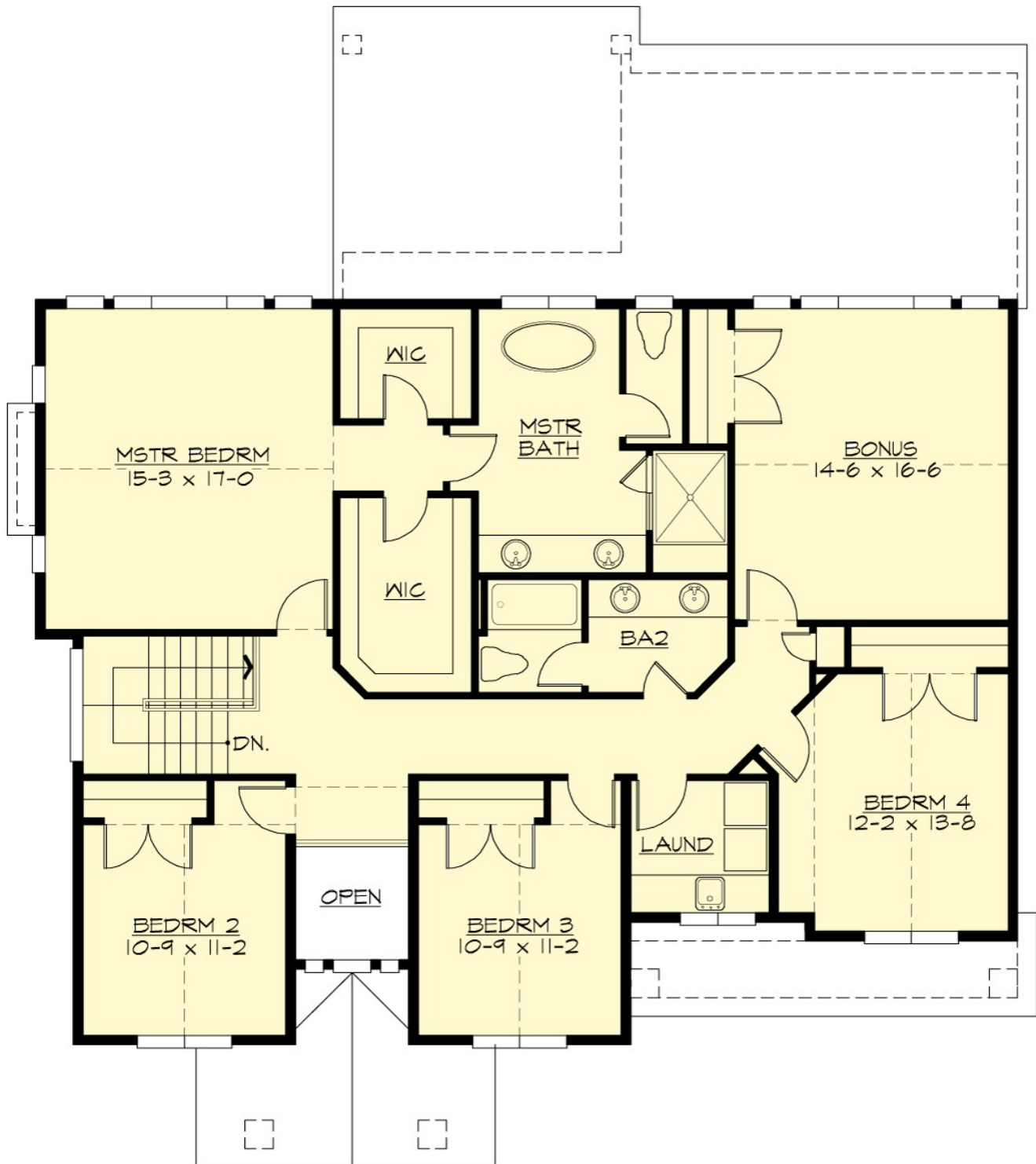
# MACMURRAY - M3684B3FT-2

## MAIN FLOOR



# MACMURRAY - M3684B3FT-2

## UPPER FLOOR



# MACMURRAY - M3684B3FT-2

## PLAN DETAILS

### Area Summary

Total Area:	<b>3344 Sq. Ft.</b>
Main Floor:	<b>1583 Sq. Ft.</b>
Upper Floor:	<b>1761 Sq. Ft.</b>
Garage Floor:	<b>585 Sq. Ft.</b>

### General Information

Stories:	<b>2</b>
Width:	<b>52'-0"</b>
Depth:	<b>59'-0"</b>
Height:	<b>26'-10"</b>

### Architectural Style

Craftsman  
Farmhouse  
Traditional

### Number of Rooms

Bedrooms:	<b>5</b>
Full Baths:	<b>3</b>
Half Baths:	<b>1</b>

### Garage

Garage Size:	<b>3</b>
Garage Door Location:	<b>Front</b>
Garage Type:	<b>Tandem</b>

### Roof Pitches

Primary:	<b>6:12</b>
Secondary:	<b>5:12</b>

### Wall Heights

Main:	<b>9'-0"</b>
Upper:	<b>8'-0"</b>

### Foundation Type

Crawl Space

### Roof Framing

Trusses

### Floor Load

Live (lbs):	<b>40 PSF</b>
Dead (lbs):	<b>10 PSF</b>

### Roof Load

Live (lbs):	<b>25 PSF</b>
Dead (lbs):	<b>15 PSF</b>
Wind:	<b>85 MPH</b>

### Design Features

- Bonus Space @ & Upper Floor
- Den/Office
- Front and Rear Porch
- Great Room
- Laundry Room @ & Upper Floor
- Master Bedroom @ Upper Floor Rear
- Craftsman House Plans
- Farmhouse Home Plans
- Traditional House Plans
- View Lot (Rear) Plans
- Wide Lot House Plans