

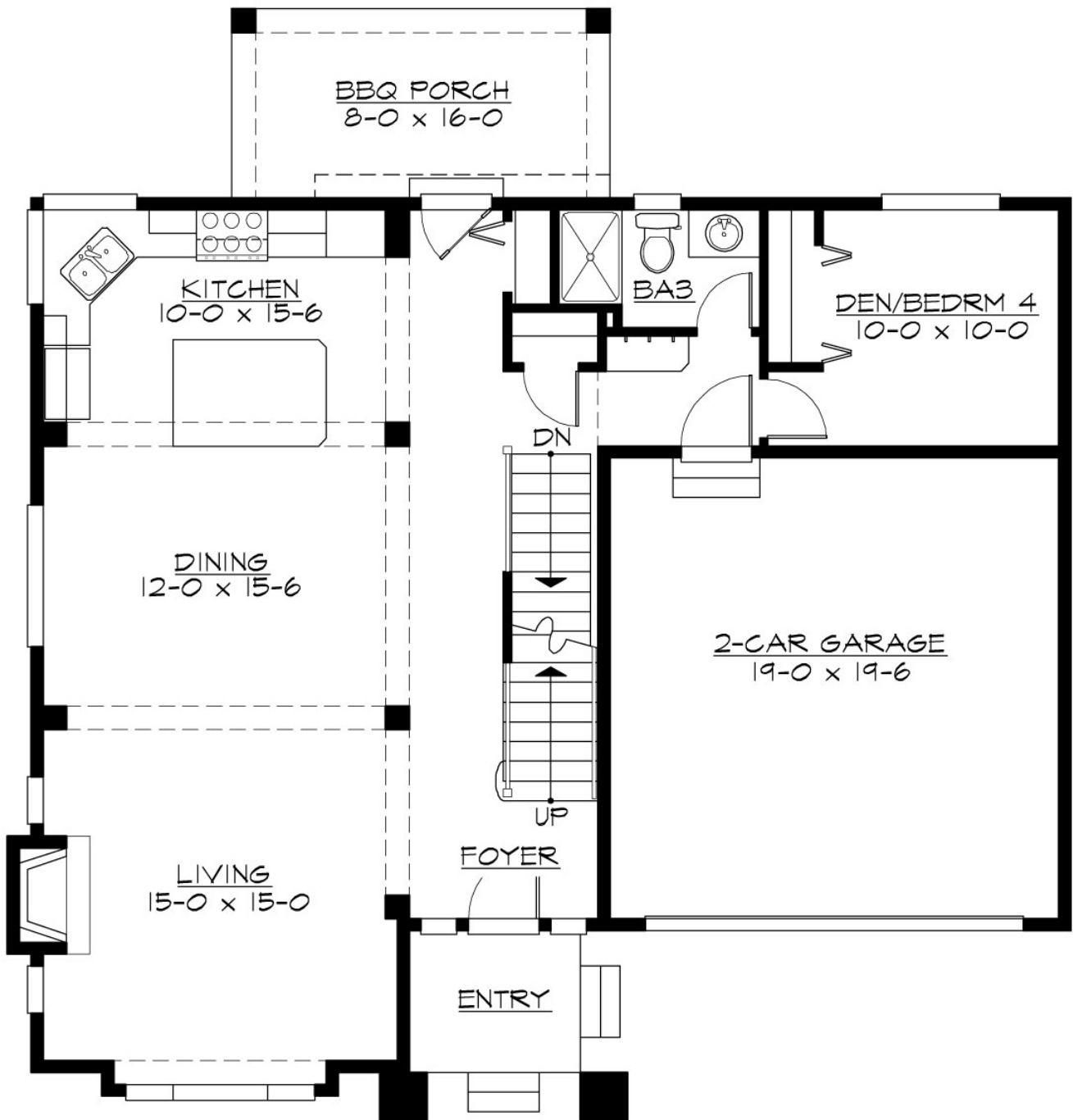
## HANOVER - M2727A2F-0PB

Total Area: **2727 Sq. Ft.**  
Garage Area: **390 Sq. Ft.**  
Garage Size: **2**  
Stories: **3**  
Bedrooms : **5**  
Full Baths : **4**  
Half Baths :  
Width : **44'-0"**  
Depth : **47'-0"**  
Height : **27'-6"**  
Foundation : **Basement**



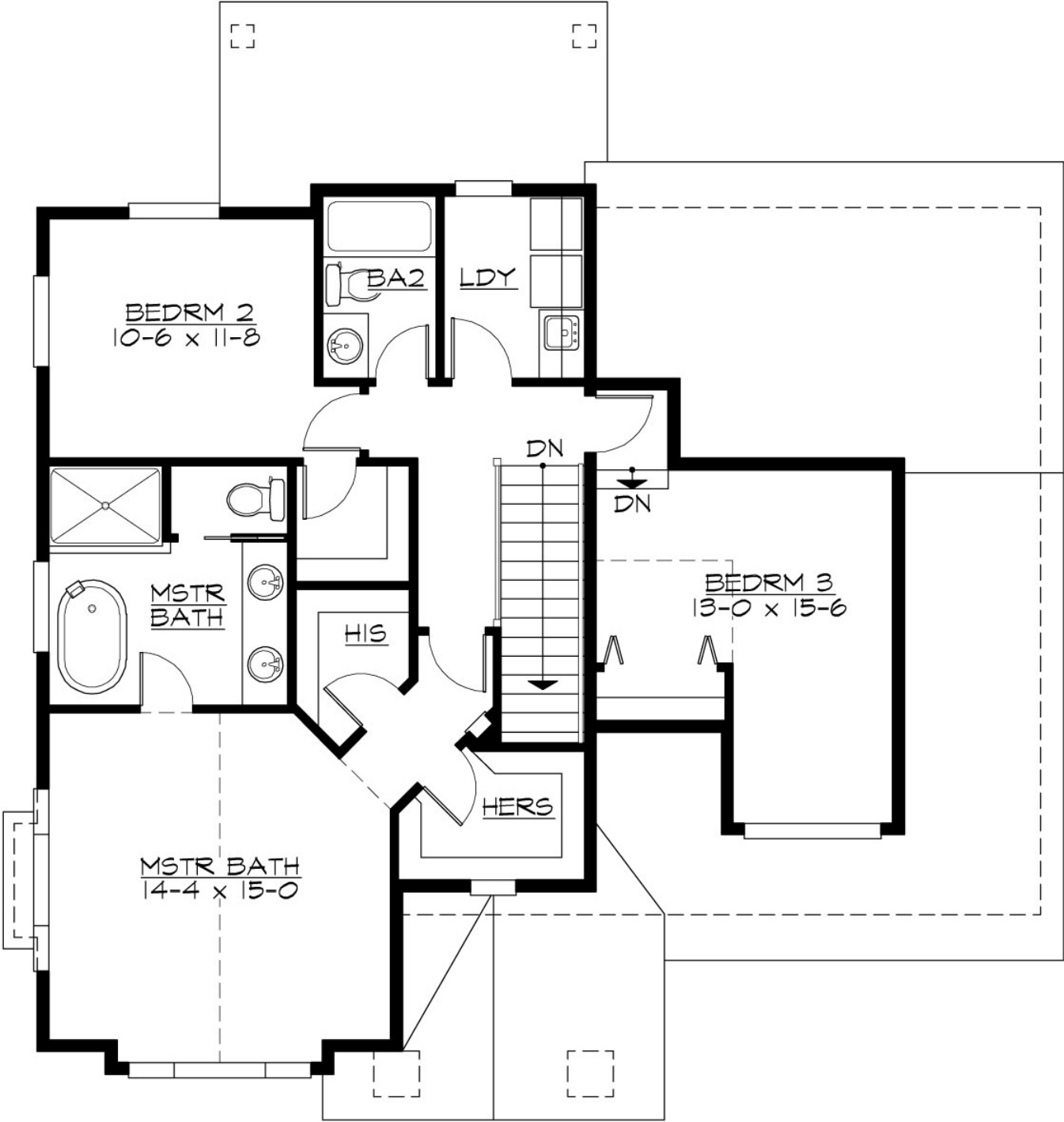
**HANOVER - M2727A2F-0PB**

**MAIN FLOOR**



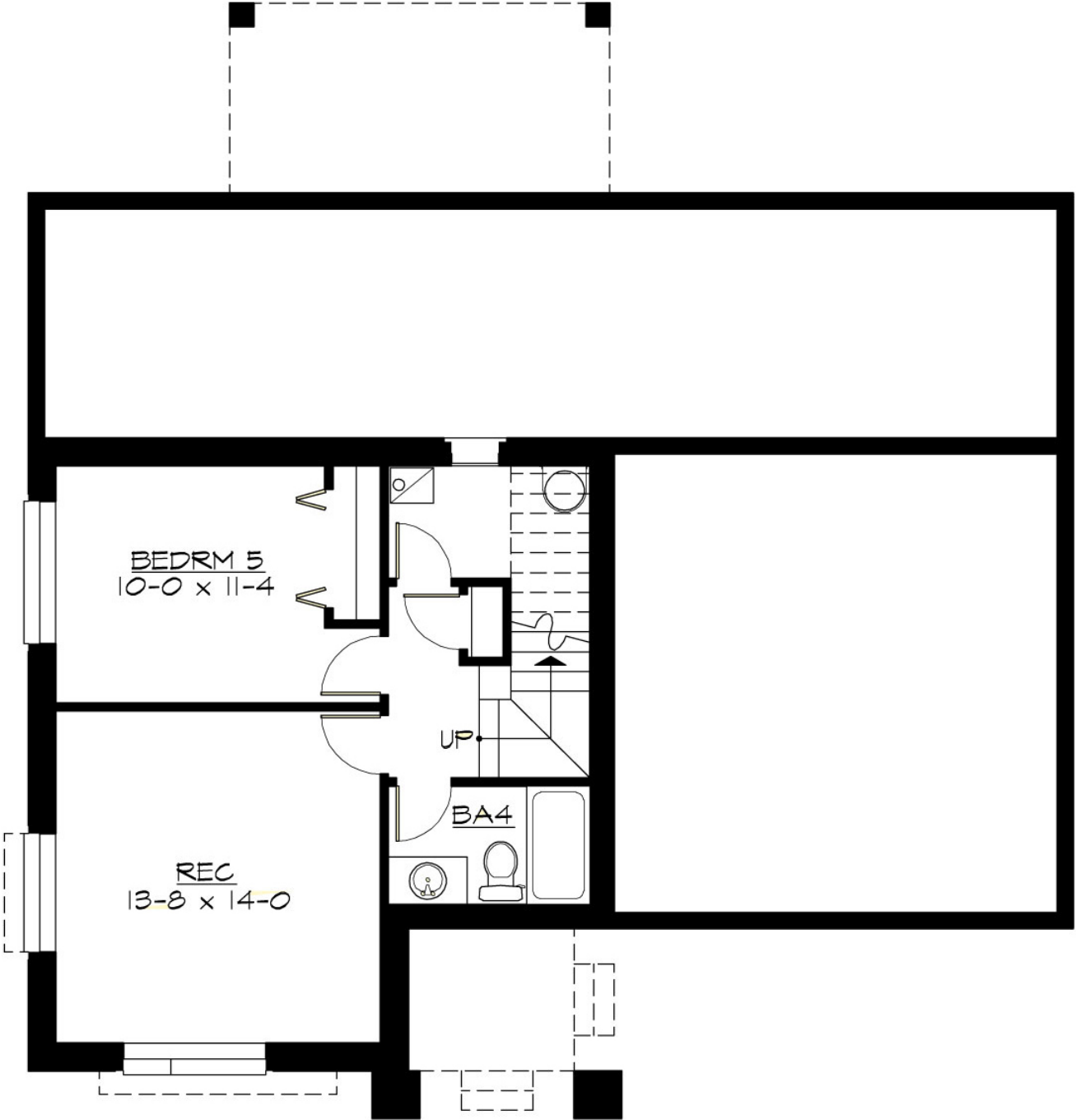
HANOVER - M2727A2F-0PB

UPPER FLOOR



HANOVER - M2727A2F-0PB

LOWER FLOOR



# HANOVER - M2727A2F-0PB

## PLAN DETAILS

### Area Summary

Total Area:	2727 Sq. Ft.
Main Floor:	1035 Sq. Ft.
Upper Floor:	1085 Sq. Ft.
Lower Floor:	607 Sq. Ft.
Garage Floor:	390 Sq. Ft.

### General Information

Stories:	3
Width:	44`-0"
Depth:	47`-0"
Height:	27`-6"

### Architectural Style

Craftsman  
Northwest  
Shingle

### Number of Rooms

Bedrooms:	5
Full Baths:	4

### Garage

Garage Size:	2
Garage Door Location:	Front

### Roof Pitches

Primary:	6:12
Secondary:	4:12

### Wall Heights

Main:	10-0"
Upper:	9-0"
Lower:	9-0"

### Foundation Type

Daylight Basement

### Roof Framing

Trusses

### Floor Load

Live (lbs):	40 PSF
Dead (lbs):	10 PSF

### Roof Load

Live (lbs):	25 PSF
Dead (lbs):	15 PSF
Wind:	85 MPH

### Design Features

- Bonus Space @ & Lower Floor
- Front and Rear Porch
- Great Room
- Laundry Room @ & Upper Floor
- Master Bedroom @ Upper Floor Front
- Craftsman House Plans
- Northwest Floor Plans
- Shingle House Plans