

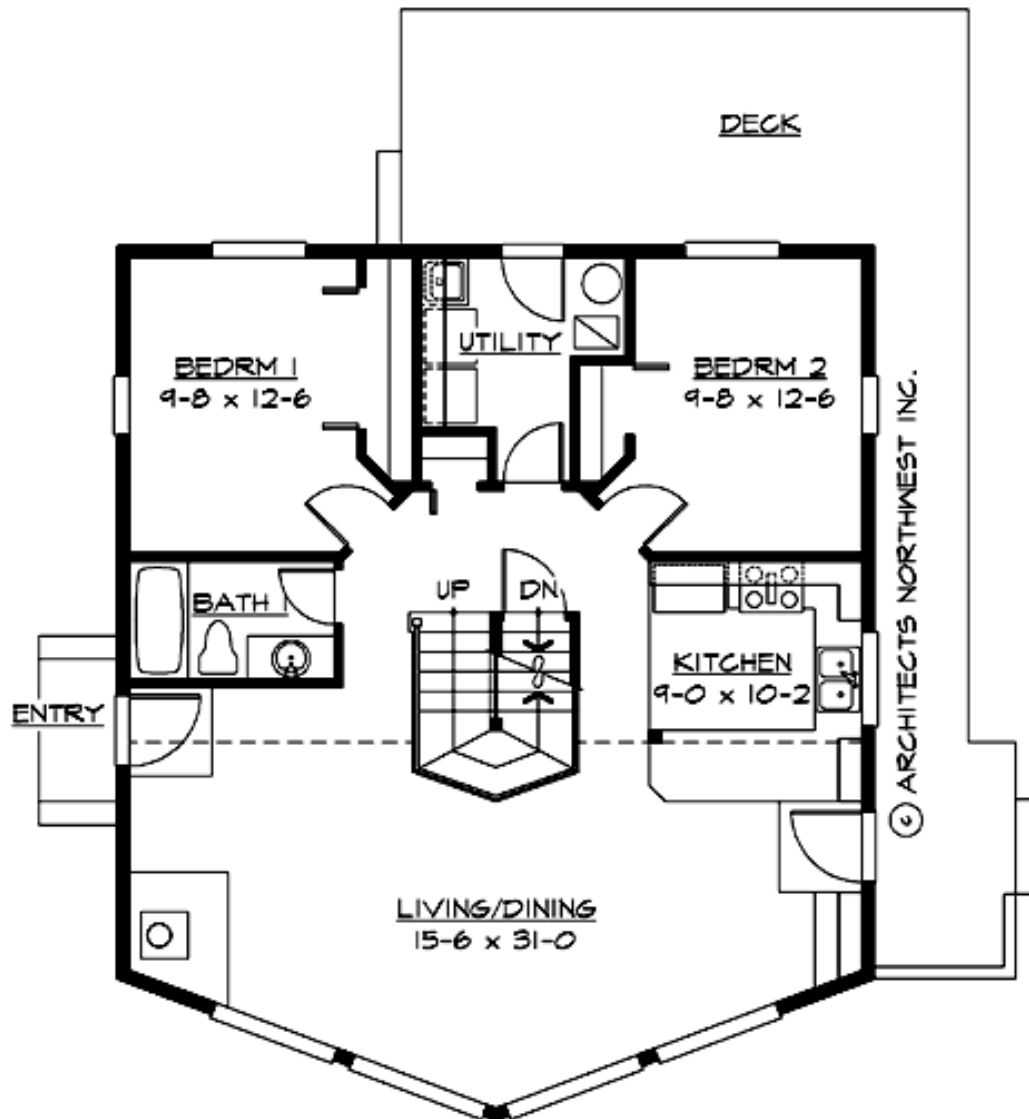
## GLACIER RIDGE - M1450A0-0DB

Total Area: **2538 Sq. Ft.**  
Garage Area: **0 Sq. Ft.**  
Garage Size: **No Garage**  
Stories: **3**  
Bedrooms : **3**  
Full Baths : **2**  
Half Baths :  
Width : **32'-0"**  
Depth : **37'-0"**  
Height : **23'-6"**  
Foundation : **Basement**



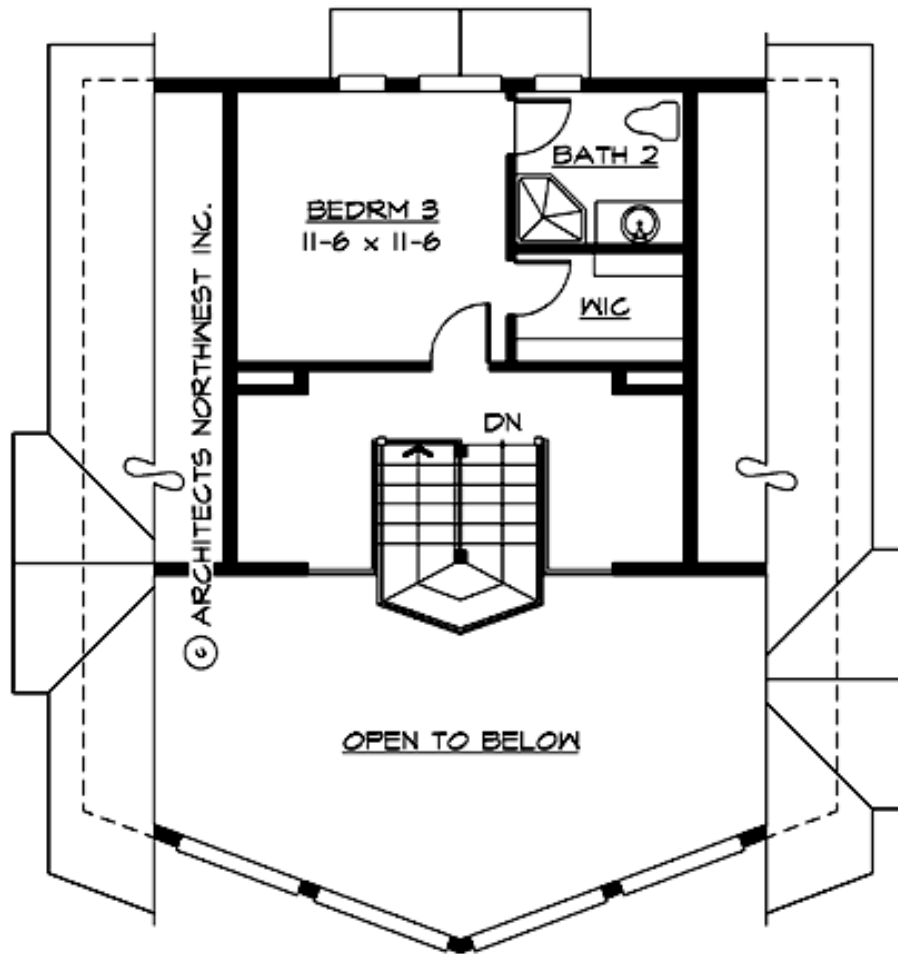
# GLACIER RIDGE - M1450A0-0DB

## MAIN FLOOR



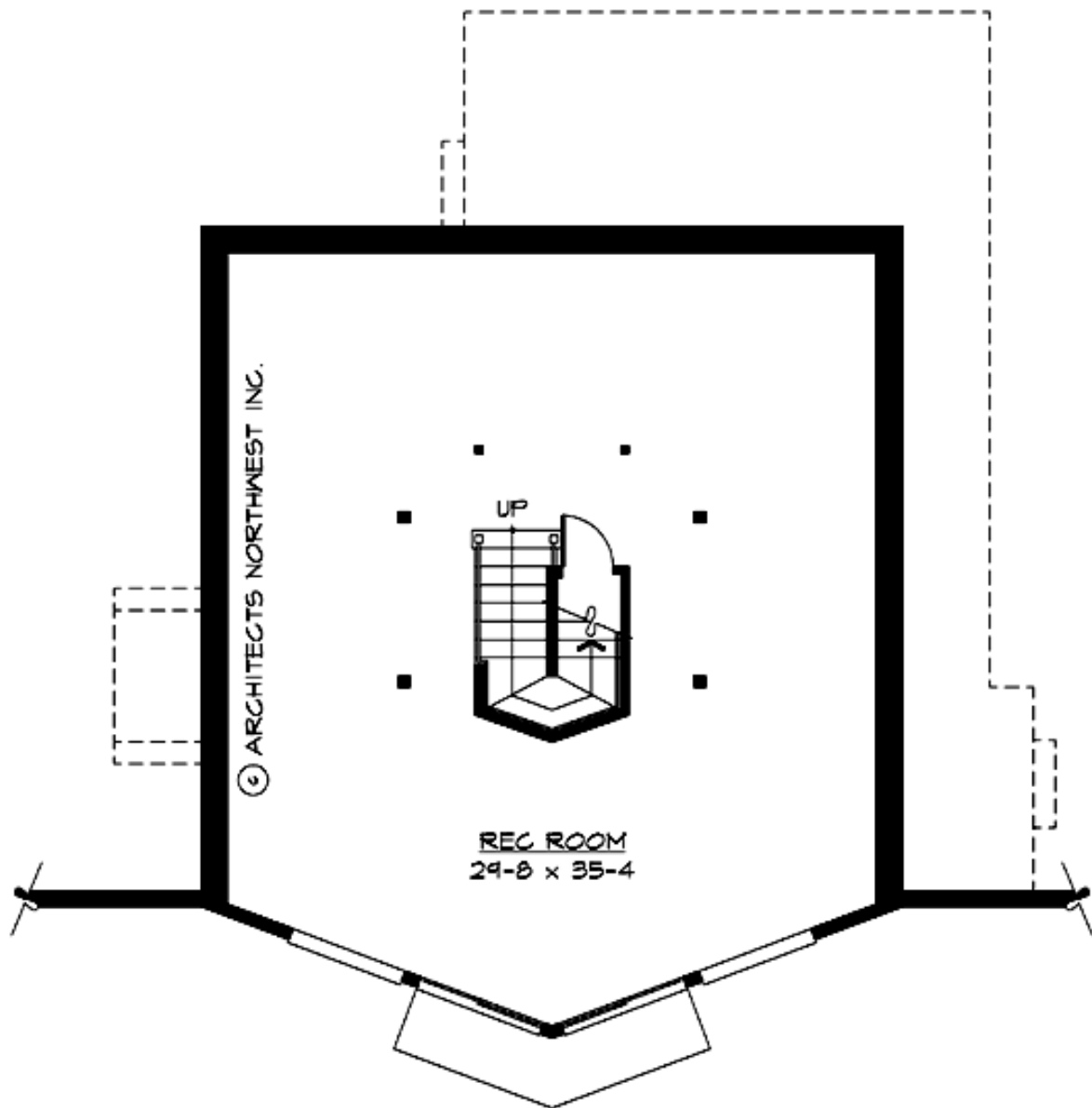
# GLACIER RIDGE - M1450A0-0DB

## UPPER FLOOR



# GLACIER RIDGE - M1450A0-0DB

## LOWER FLOOR



# GLACIER RIDGE - M1450A0-0DB

## PLAN DETAILS

### Area Summary

Total Area:	<b>2538 Sq. Ft.</b>
Main Floor:	<b>1088 Sq. Ft.</b>
Upper Floor:	<b>362 Sq. Ft.</b>
Lower Floor:	<b>1088 Sq. Ft.</b>

### General Information

Stories:	<b>3</b>
Width:	<b>32`-0"</b>
Depth:	<b>37`-0"</b>
Height:	<b>23`-6"</b>

### Architectural Style

Alpine  
Cottage  
Mountain

### Number of Rooms

Bedrooms:	<b>3</b>
Full Baths:	<b>2</b>

### Garage

Garage Size: **No Garage**

### Roof Pitches

Primary: **9:12**

### Wall Heights

Main:	<b>8-0"</b>
Upper:	<b>8-0"</b>
Lower:	<b>9-0"</b>

### Foundation Type

Cellar Basement

### Roof Framing

Stick

### Floor Load

Live (lbs):	<b>40 PSF</b>
Dead (lbs):	<b>10 PSF</b>

### Roof Load

Live (lbs):	<b>25 PSF</b>
Dead (lbs):	<b>15 PSF</b>
Wind:	<b>85 MPH</b>

### Design Features

- Bonus Space @ & Lower Floor
- Great Room
- Laundry Room @ Main Floor
- Master Bedroom @ Upper Floor Rear
- Alpine House Designs
- Cottage House Plans
- Mountain House Plans
- Vacation House Plans