

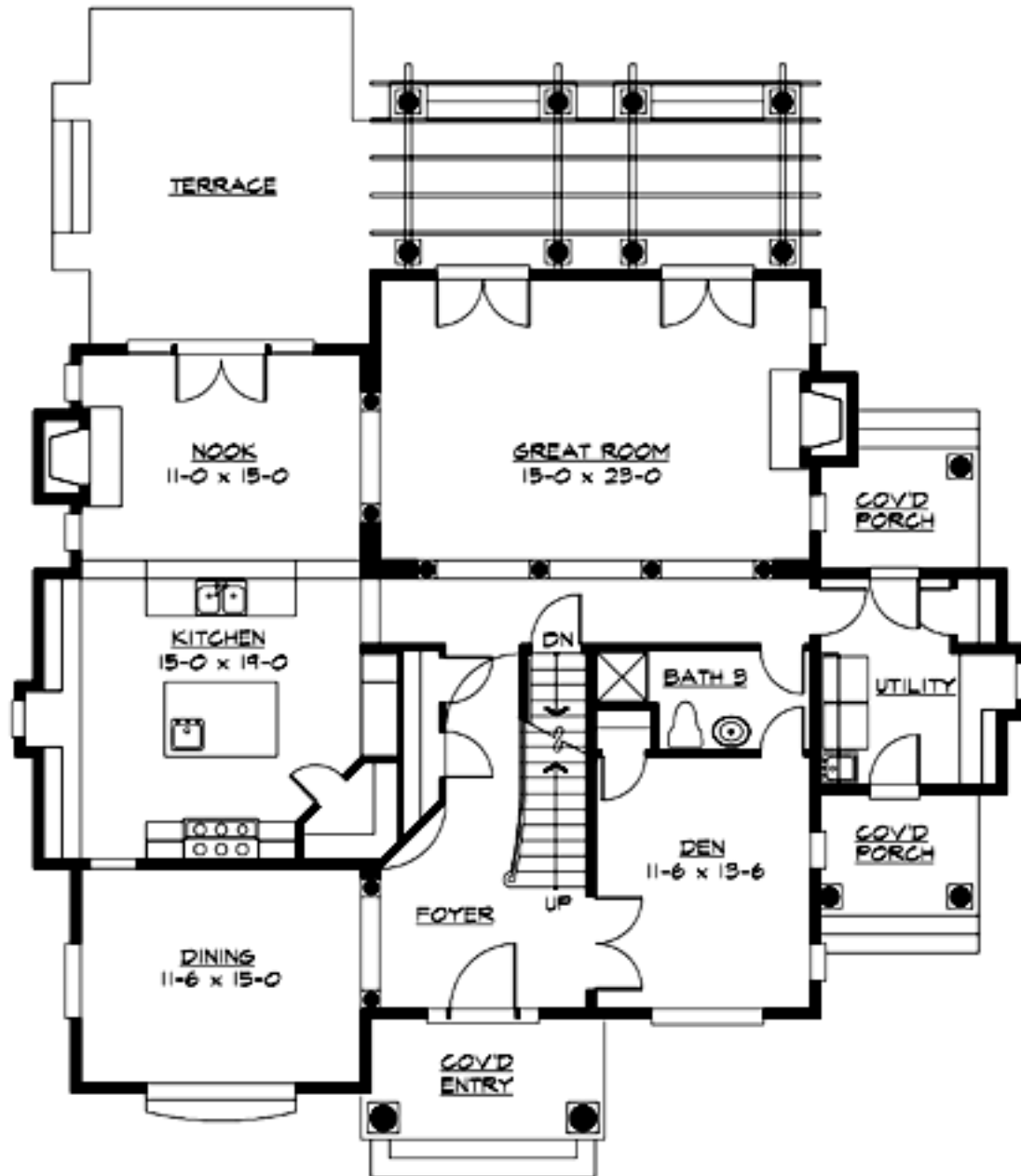
## COTTAGE GROVE PARK - M3245A0-0FB

Total Area: **4965 Sq. Ft.**  
Garage Area: **0 Sq. Ft.**  
Garage Size: **3**  
Stories: **3**  
Bedrooms : **4**  
Full Baths : **4**  
Half Baths :  
Width : **52`-0"**  
Depth : **46`-0"**  
Height : **36`-0"**  
Foundation : **Basement**



# COTTAGE GROVE PARK - M3245A0-0FB

## MAIN FLOOR



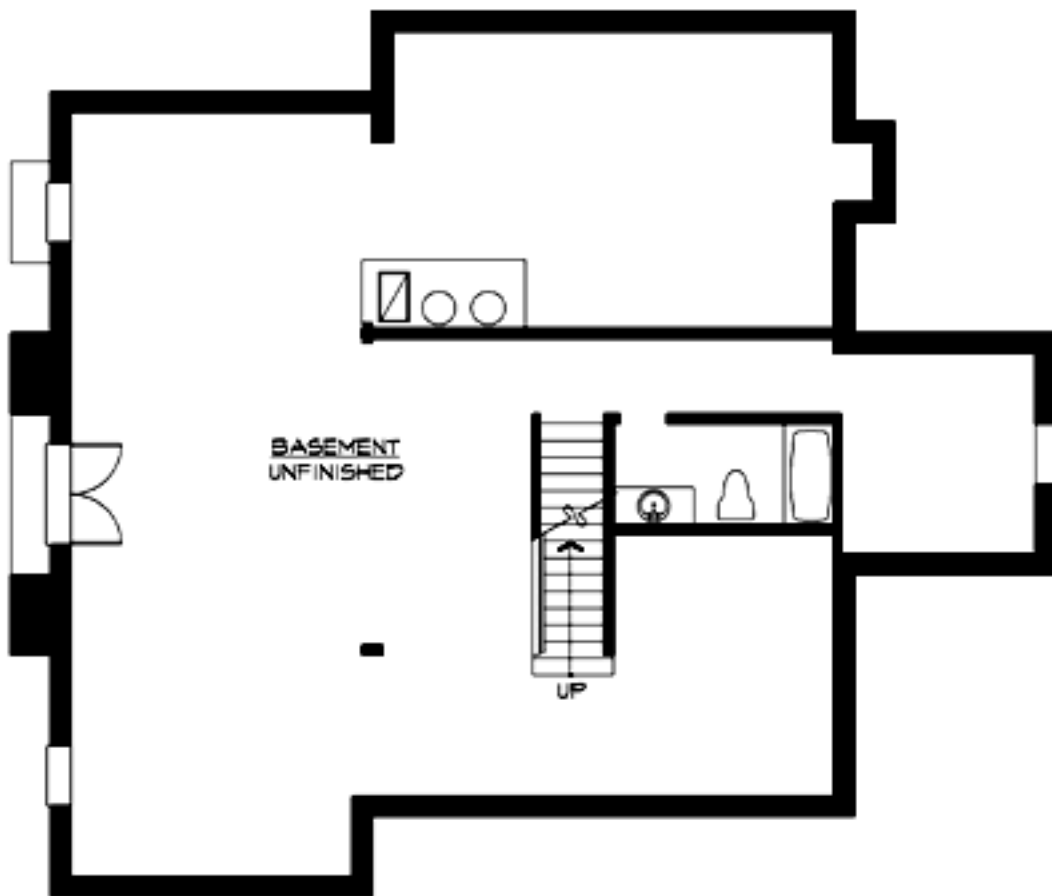
# COTTAGE GROVE PARK - M3245A0-0FB

## UPPER FLOOR



# COTTAGE GROVE PARK - M3245A0-0FB

## LOWER FLOOR



# COTTAGE GROVE PARK - M3245A0-0FB

## PLAN DETAILS

### Area Summary

Total Area:	<b>4965 Sq. Ft.</b>
Main Floor:	<b>1750 Sq. Ft.</b>
Upper Floor:	<b>1495 Sq. Ft.</b>
Lower Floor:	<b>1720 Sq. Ft.</b>

### General Information

Stories:	<b>3</b>
Width:	<b>52`-0"</b>
Depth:	<b>46`-0"</b>
Height:	<b>36`-0"</b>

### Architectural Style

Cottage  
Hampton  
Shingle

### Number of Rooms

Bedrooms:	<b>4</b>
Full Baths:	<b>4</b>

### Garage

Garage Size:	<b>3</b>
Garage Door Location:	<b>Front</b>
Garage Type:	<b>Detached</b>

### Roof Pitches

Primary:	<b>12:12</b>
----------	--------------

### Wall Heights

Main:	<b>9-0"</b>
Upper:	<b>9-0"</b>
Lower:	<b>9-0"</b>

### Foundation Type

Cellar Basement

### Roof Framing

Trusses

### Floor Load

Live (lbs):	<b>40 PSF</b>
Dead (lbs):	<b>10 PSF</b>

### Roof Load

Live (lbs):	<b>25 PSF</b>
Dead (lbs):	<b>15 PSF</b>
Wind:	<b>85 MPH</b>

### Design Features

- Den/Office
- Great Room
- Laundry Room @ Main Floor
- Master Bedroom @ Upper Floor Front
- Cottage House Plans
- Hampton House Plans
- Shingle House Plans
- View Lot (Rear) Plans